

MANAGE RESISTANCE *Now*

Protect your land, one field at a time



HERBICIDE RESISTANCE 101

The science behind herbicide resistance

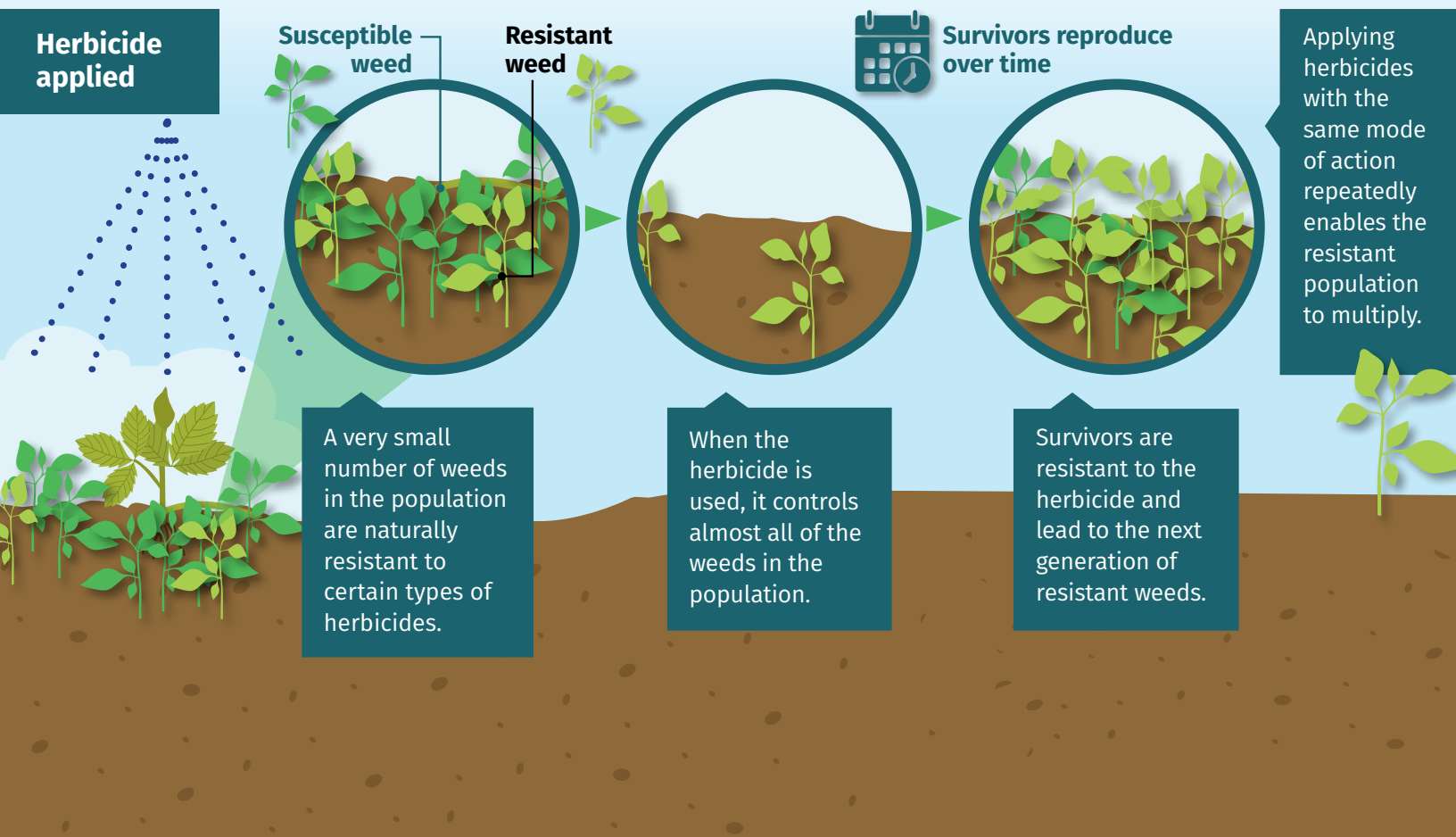
WHAT IS HERBICIDE RESISTANCE?

Herbicide resistance is the genetic capacity of a weed to survive a herbicide treatment that would effectively control it under normal use conditions.

WHY DOES HERBICIDE RESISTANCE DEVELOP?

Herbicide resistance is an evolutionary response to historical, grower-implemented weed management practices.

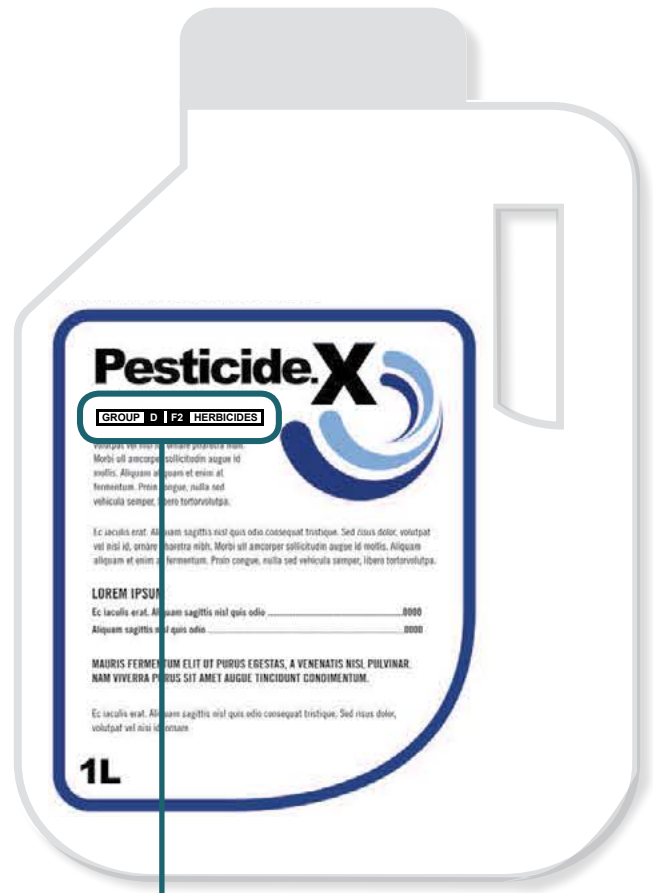
HOW DOES HERBICIDE RESISTANCE DEVELOP?



MODE OF ACTION MATTERS

To achieve effective resistance management, it is critical to understand a herbicide's mode of action – the way in which the active ingredient works to eliminate the target weed. Mode of action is categorized by a group number and identified on the herbicide label. Using herbicide mixtures that combine multiple modes of action to control the same target weed is one of the best management practices for resistance management.

Consult with your crop advisor or visit **ManageResistanceNow.ca** for strategies to manage herbicide resistance in your fields.



GROUP NUMBER

MANAGE RESISTANCE *Now*

Protect your land, one field at a time

For more information, visit **ManageResistanceNow.ca**

This information is brought to you by CropLife Canada.

